



SHOPPES
ON HAMILTON

Premier opportunity along Regina's fashion runway, **Shoppes on Hamilton.**

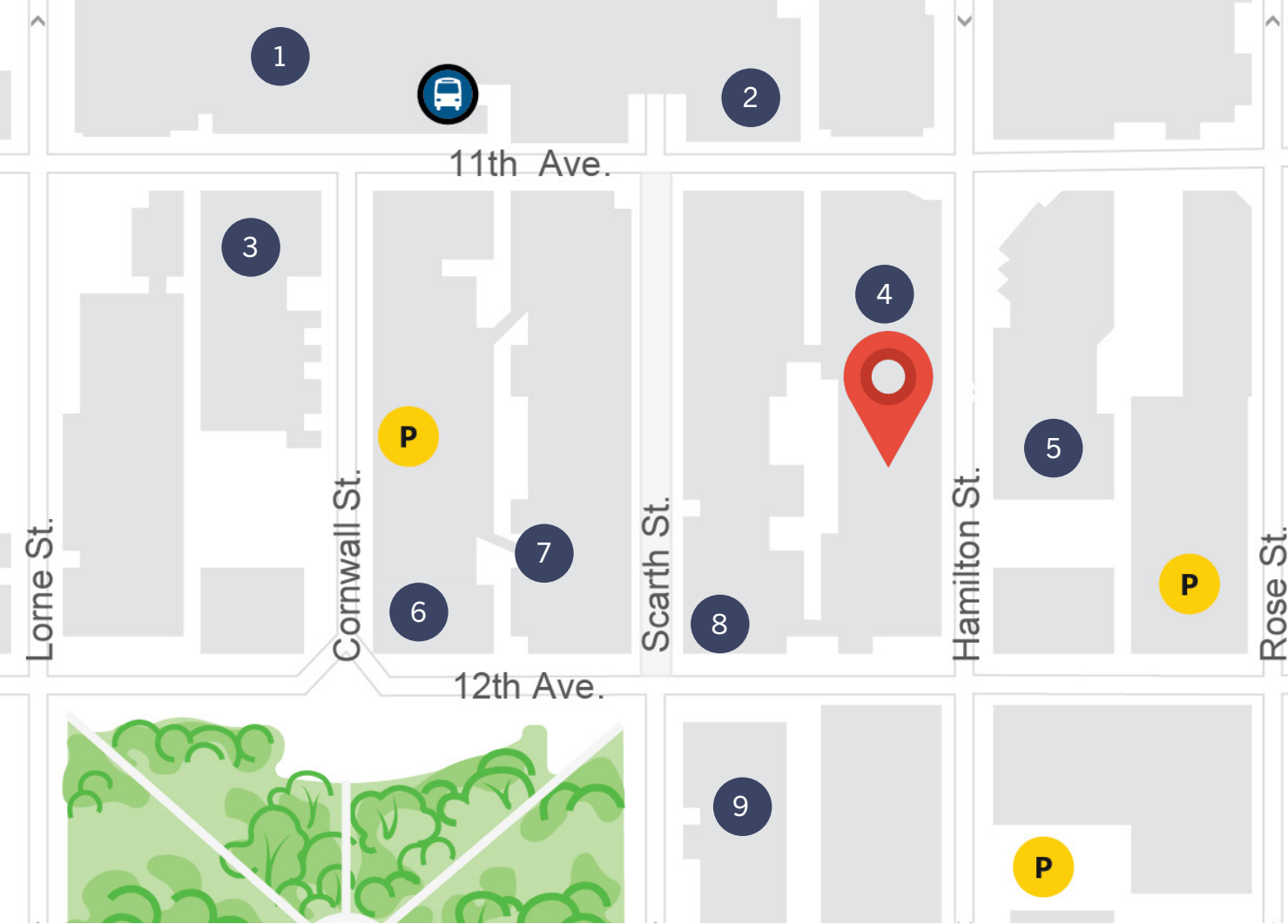
1830 Hamilton

Exceptional retail opportunity featuring 3,179 square feet of prime, high-visibility space on one of downtown Regina's most vibrant and high-traffic corridors. Shoppes on Hamilton features enhanced sidewalks and streetscapes and is flanked by on-street parking, thriving office buildings, retailers, coffee shops and restaurants."



LEASING INQUIRIES

Chantal Blaisdell | 306.777.0641 | cblaisdell@harvard.ca | harvard.ca



3,179
rentable square feet

\$6.36psf
operating costs

\$4.82psf
property tax

Map Key

- | | |
|-----------------------------|---------------------|
| 1 Cornwall Centre | 2 Starbucks |
| 3 Avenue Restaurant and Bar | 4 Greenspot Cafe |
| 5 Lancaster Downtown | 6 OEB Breakfast Co. |
| 7 Mikel Coffee | 8 Rosemary & Rye |



**Located on Hamilton Street,
one of Regina's most
established retail corridors.**

- Adjacent to Regina's premier shopping centre destination - the Cornwall Centre, occupied by over 90 stores that annually attract over 8.4 million shoppers.
- Over 4 million sq.ft. of office space in the surrounding area
- 10 nearby hotels that welcome over 500,000 guests annually
- Adjacent to City Square Plaza and Victoria Park - Regina's premier outdoor cultural events facility and hub of pedestrian linked activity.

Traffic Count (2025)

Daily: 4100

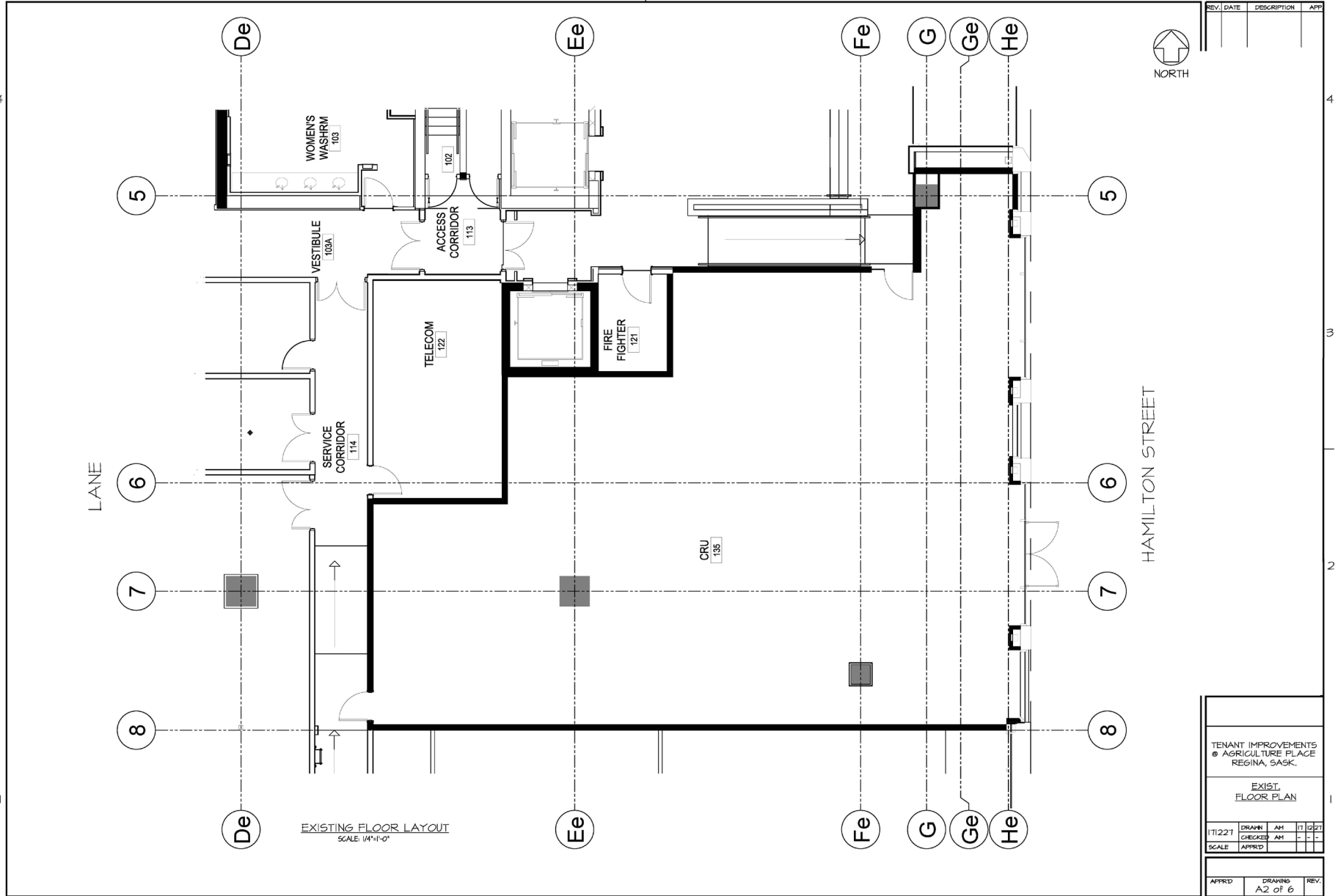
Pedestrian (2025)

Hourly: 182

Daily: 1255



Floor Plan



Interior

